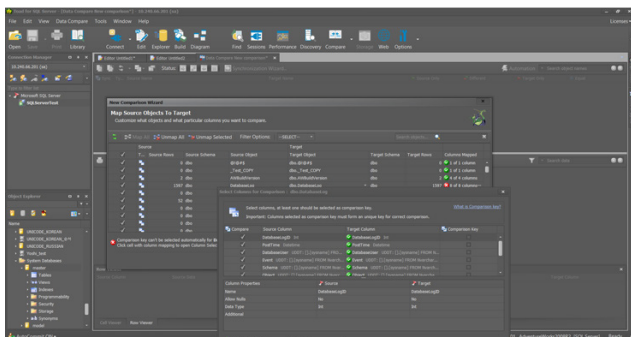


Introducing Toad for SQL Server

Your Next Step Beyond ApexSQL Compare and Sync

In the evolving landscape of database management, data professionals are constantly seeking tools that not only streamline workflows but also empower them with enhanced functionalities and a seamless user experience. ApexSQL Compare and Sync by Quest Software has offered robust capabilities in database comparison and synchronization, but moving forward will not be available.

Enter Toad for SQL Server – developed by Quest, a pioneer and leader in database management tools. Toad for SQL Server offers a holistic approach to database development, administration and optimization.



FEATURES COMPARISON

With the shift from ApexSQL Compare and Sync to Toad for SQL Server in the Quest portfolio, let's take a look at a feature comparison in the matrix below:

Benefits:

- **Enhanced Productivity:** Toad streamlines database management tasks through a user-friendly interface and automation features, making it easier to manage complex databases. It includes tools for batch processing and script automation that save time and minimize human error.
- **Improved Code Quality:** Toad aids in writing more efficient SQL code with features like syntax highlighting, code snippets, and auto-completion. Higher editions also include SQL optimization tools to enhance the performance of queries and reduce resource consumption.
- **Collaboration and Version Control:** Toad supports collaboration by integrating with version control systems, allowing multiple developers to work on the same database objects more effectively and keep track of changes.
- **Comprehensive Database Administration:** Toad offers robust administration tools that help monitor and manage database performance and security. This includes diagnostics, health checks, and detailed analytics to maintain database standards and ensure compliance with best practices.

Functionality Area		ApexSQL	Toad for SQL Server
Compare Data	Source and data destination options	<ul style="list-style-type: none"> Database Database backup Source Control Script folder 	<ul style="list-style-type: none"> Database
	Comparison options	<ul style="list-style-type: none"> Rich comparison options Comparison results overview Comparison report output: Excel, HTML, CSV 	<ul style="list-style-type: none"> Rich comparison options Comparison results overview Comparison report output: Excel, printer
	Object filter	✓	✓
	Schema and object mapping	✓	✓
	Synchronization options	<ul style="list-style-type: none"> Synchronization direction options Create/run/open in editor synchronization script Create a C# solution Create an executable installer Create database backup Create rollback script Re-compare after synchronization 	<ul style="list-style-type: none"> Synchronization direction options Create/run/open in editor synchronization script Re-compare after synchronization Abort on error
	Project file management	<ul style="list-style-type: none"> Save project to a file Open project file Open recent projects on startup 	<ul style="list-style-type: none"> Save project to a file Open project file
Automation	<ul style="list-style-type: none"> Save as automation script (CLI) 	<ul style="list-style-type: none"> Automation wizard 	
Compare Schema	Source and data destination options	<ul style="list-style-type: none"> Database Database snapshot Database backup Source Control Script folder 	<ul style="list-style-type: none"> Database Database snapshot <p>Other enhancements planned for Toad for SQL Server 8.2 release</p>
	Comparison options	<ul style="list-style-type: none"> Rich comparison options Comparison results overview with filter and search capabilities Comparison report output: Excel, HTML, database, SQL script, XML file, differential snapshot, comparison log 	<ul style="list-style-type: none"> Rich comparison options Comparison results overview with filter and search capabilities Comparison report output: Excel, printer, HTML, MHT file, RTF file, Docx file, CSV file, text file, image file
	Object filter	✓	✓
	Compare and sync schema ratio	<ul style="list-style-type: none"> 1 to 1 	<ul style="list-style-type: none"> 1 to 1 1 to many

Functionality Area		ApexSQL	Toad for SQL Server
Compare Schema	Synchronization options	<ul style="list-style-type: none"> Synchronization direction options Create/run/open in editor synchronization script Create a C# solution Create an executable installer Create database backup Create rollback script Re-compare after synchronization 	<ul style="list-style-type: none"> Synchronization direction options Create/run/open in editor synchronization script Re-compare after synchronization Abort on error
	Project file management	<ul style="list-style-type: none"> Save project to a file Open project file Open recent projects on a startup 	<ul style="list-style-type: none"> Save project to a file Open project file
	Automation	<ul style="list-style-type: none"> Save as an automation script (CLI) 	<ul style="list-style-type: none"> Automation wizard
Compare Files and Folders	Compare files	✓	✓
	Compare folders	✓	<ul style="list-style-type: none"> Planned enhancement for Toad for SQL Server 8.2 release
	Report comparison export	<ul style="list-style-type: none"> HTML report for both files and folder comparisons 	<ul style="list-style-type: none"> Printer
	Save as project file	<ul style="list-style-type: none"> Available for both files and folder comparisons 	<ul style="list-style-type: none"> Planned enhancement for Toad for SQL Server 8.2 release
	Save as automation script	<ul style="list-style-type: none"> Available for both files and folder comparisons 	<ul style="list-style-type: none"> Command line support initiative for Toad for SQL Server in future
	Merge scripts generator	<ul style="list-style-type: none"> Available for files comparisons 	<ul style="list-style-type: none"> Planned enhancement for Toad for SQL Server 8.2 release
	Comparison options	<ul style="list-style-type: none"> Feature rich comparison and ignore options 	<ul style="list-style-type: none"> Limited settings

About Quest

Quest creates software solutions that make the benefits of new technology real in an increasingly complex IT landscape. From database and systems management, to Active Directory and Microsoft 365 migration and management, and cybersecurity resilience, Quest helps customers solve their next IT challenge now. Quest Software. Where next meets now.